

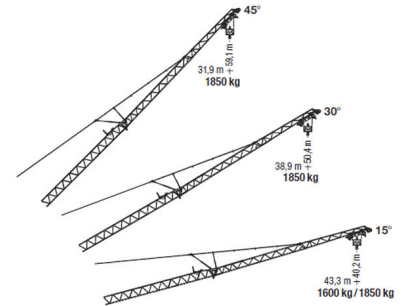
Mobiler Baukran MK88

45 m Ausleger

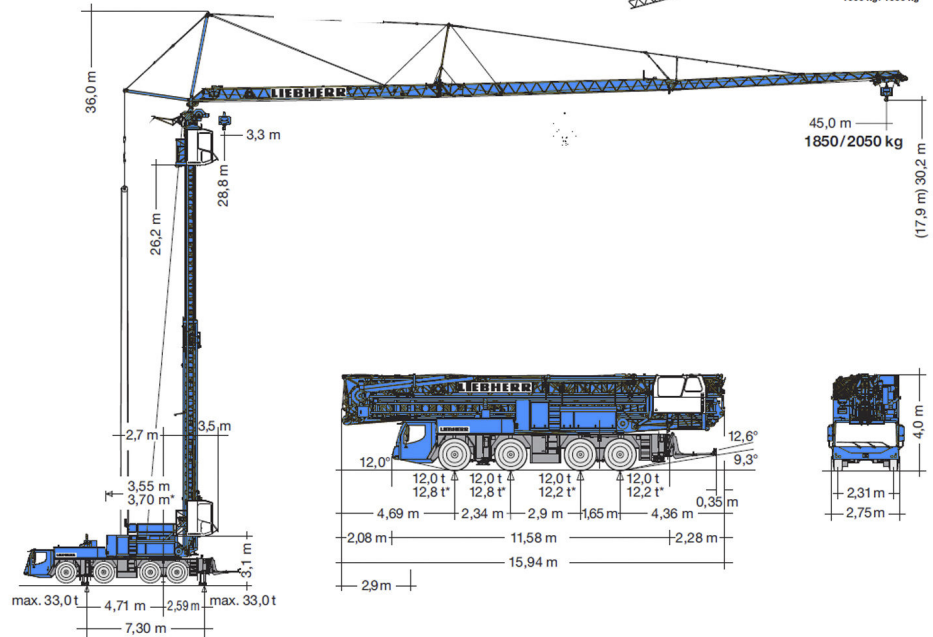


Merkmale auf einen Blick

Max. Hakenhöhe: 30,2 m
Max. Tragfähigkeit: 8.000 kg
Max. Ausladung: 45,0 m
Tragfähigkeit bei max. Ausladung: 1.850 / 2.050 kg



Größter und stärkster 4-Achser im Markt



Traglasten MK 88

Ausleger horizontal

Jib horizontal / Flèche horizontale / Braccio orizzontale / Pluma horizontal / Giek horizontaal / Стрела в горизонтальном положении

Icon	m	m / kg	m / kg																	
			12,0	14,0	16,0	18,0	20,0	22,0	24,0	26,0	28,0	30,0	32,0	34,0	36,0	38,0	40,0	42,0	44,0	45,0
max. 6,5 Bft (14 m/sec.)	45,0	3,3 - 11,0 8000	7370	6360	5580	4960	4460	4050	3700	3400	3140	2920	2720	2540	2390	2250	2120	2000	1900	1850
max. 8,0 Bft (20 m/sec.)	45,0	3,3 - 10,0 8000	6770	5850	5140	4570	4110	3730	3410	3130	2900	2690	2510	2340	2200	2070	1950	1840	1750	1700

Auslegersteilstellungen

Steep angle positions / Flèche en position relevée / Posizione impennata del braccio / Inclinación de pluma / Hoofdgiekstand
Положение стрелы под углом

Icon	m	m / kg	15°										45°									
			m					kg					m					kg				
max. 6,5 Bft (14 m/sec.)	45,0	3,0 - 10,0 6000	3,2 - 38,0					1850					2,7 - 31,9					1850				
max. 8,0 Bft (20 m/sec.)	45,0	3,0 - 10,0 6000	3,2 - 32,0					1850					2,7 - 28,0					1850				
			38,0 - 43,3					1850 - 1600*					28,0 - 31,9					1850 - 1600*				
			32,0 - 43,3					1850 - 1300*														

Icon	m	m / kg	30°																
			8,0	10,0	12,0	14,0	16,0	18,0	20,0	22,0	24,0	26,0	28,0	30,0	32,0	34,0	36,0	38,9	
max. 6,5 Bft (14 m/sec.)	45,0	3,0 - 10,0 6000	6000	6000	5260	4690	4220	3830	3500	3220	2980	2770	2580	2410	2260	2130	2010	1850	
max. 8,0 Bft (20 m/sec.)	45,0	3,0 - 8,0 6000	6000	5200	4580	4080	3670	3340	3050	2800	2590	2410	2240	2100	1970	1850	1740	1600	